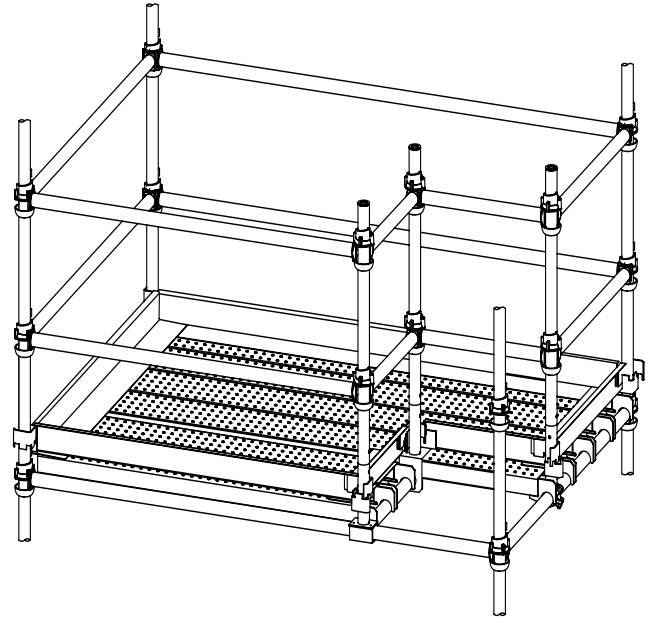
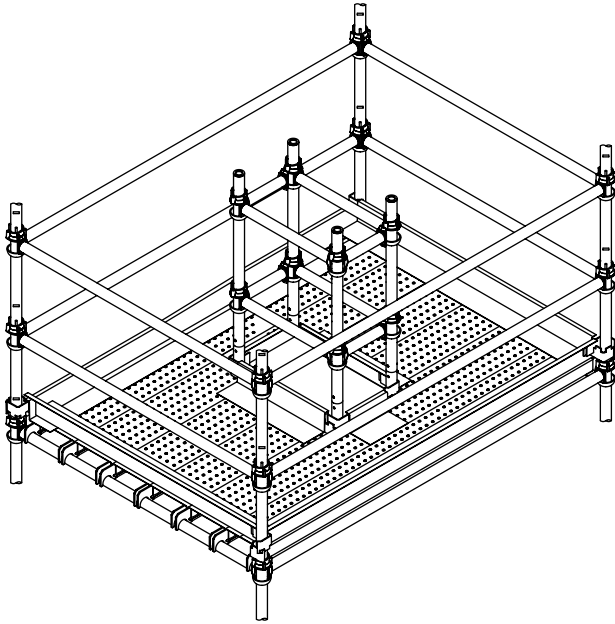


# Flex-Deck System



## WARNING

PLEASE READ AND FOLLOW THESE INSTRUCTIONS BEFORE INSTALLING, USING, OR DISMANTLING THE FLEX-DECK SYSTEM. SERIOUS INJURY OR DEATH CAN RESULT FROM FAILURE TO FAMILIARIZE YOURSELF AND COMPLY WITH ALL APPLICABLE SAFETY REQUIREMENTS OF FEDERAL, STATE, LOCAL AND PROVINCIAL REGULATIONS.

INSTALLATION AND DISMANTLING MUST BE DONE UNDER THE SUPERVISION OF A COMPETENT PERSON EXPERIENCED IN SCAFFOLD ERECTION AND DISMANTLING. DO NOT USE IN ANY OTHER FASHION OR WITH ANY OTHER COMPONENT WITHOUT CONSULTING BRANDSAFWAY.

## Notes:

1. For use with **SSP\_Plank** only.
2. Can be used with BrandSafway CupLok®, SafLock®, and Systems™ Scaffold.
3. Flex-Deck transoms are intended for light-duty applications of **25 psf or one (1) worker weighing 250 lb, including tools.** Ensure SSP\_Planks, horizontals, and vertical posts will support all applied loads.
4. Guard Rails (toprail and midrail) must be installed as shown in this manual. For any configuration not shown, contact BrandSafway Engineering.
5. SSP\_Planks can support a maximum of two Flex-Deck supports. See page 4. Do not install Flex-Deck supports on both sides of one SSP\_.
6. The sockets on the Flex-Deck supports and Flex-Deck Spigot are provided to support Flex-Deck Guard Rail posts only.
7. Install steel cable ties as shown on page 4.

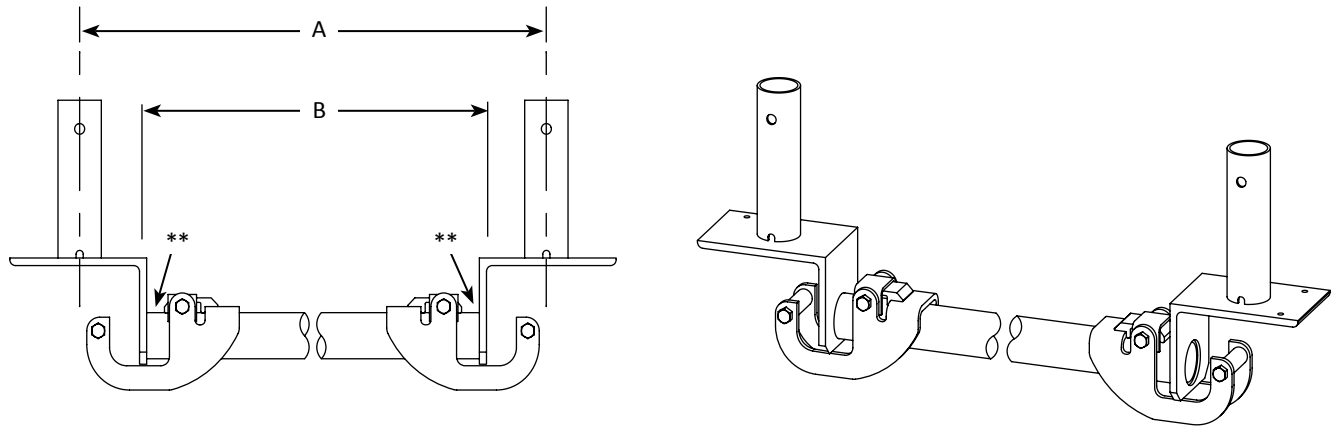
# Component Identification

## Section 1

### Deck Support: Plank-to-Plank

Part No.	Description	Weight lb	Dim A (in)	Dim B (in)
FDDSPP1	1'-0" Plank-to-Plank	15.9	12"	9 ⅛"
FDDSPP2	2'-0" Plank-to-Plank	17.6	24"	18 ⅛"
FDDSPP3	3'-0" Plank-to-Plank	19.4	36"	27 ⅛"
FDDSPP42	3'-6" Plank-to-Plank	26.2	42"	36 ⅛"

\*\*Note: SSP\_Plank hook fits into this location.

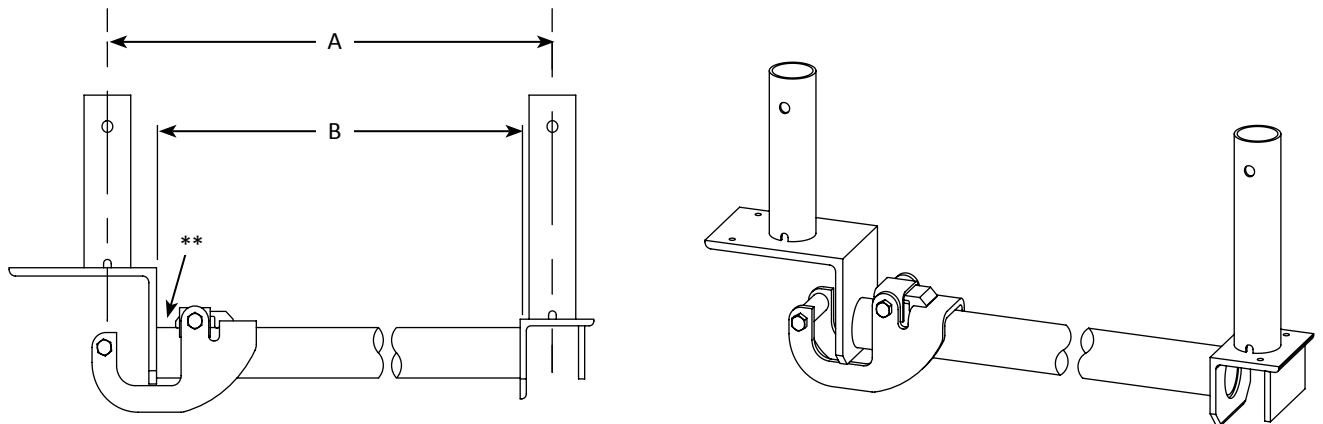


### Deck Support: Plank-to-Horizontal

Part No.	Description	Weight lb	Dim A (in)	Dim B (in)
FDDSPH1*	1'-0" Plank-to-Horizontal	12.4	12"	9 ¼"
FDDSPH2	2'-0" Plank-to-Horizontal	14.6	24"	20 ⅛"
FDDSPH3	3'-0" Plank-to-Horizontal	16.3	36"	29 ⅛"
FDDSPH42	3'-6" Plank-to-Horizontal	22.2	42"	38 ⅛"

\*Note: Fits one 6" wide SSP\_Plank when used on Systems™ and SafLock®, and one 9" wide SSP\_Plank when used on CupLok®.

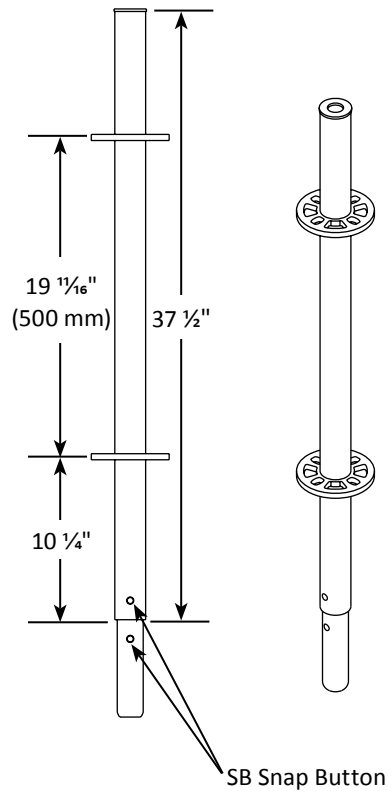
\*\*Note: SSP\_Plank hook fits into this location.



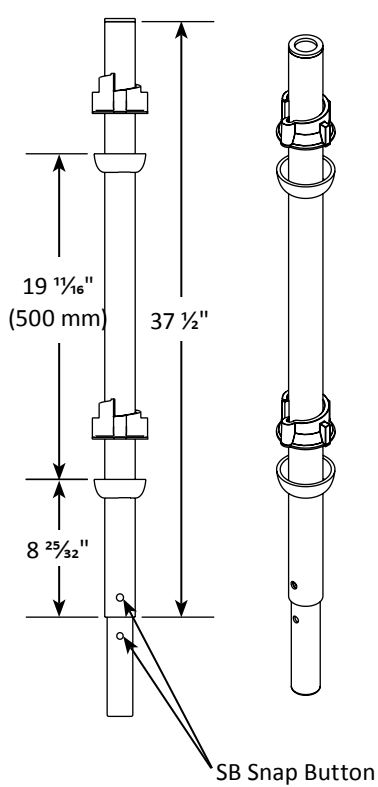
## Flex-Deck Guard Rail Posts

Part No.	Description	Weight lb
FDDSPC	Guard Rail Post Cup	13.4
FDDSPS	Guard Rail Post SVP	12.3
FDDSPR	Guard Rail Post Ring	12.0

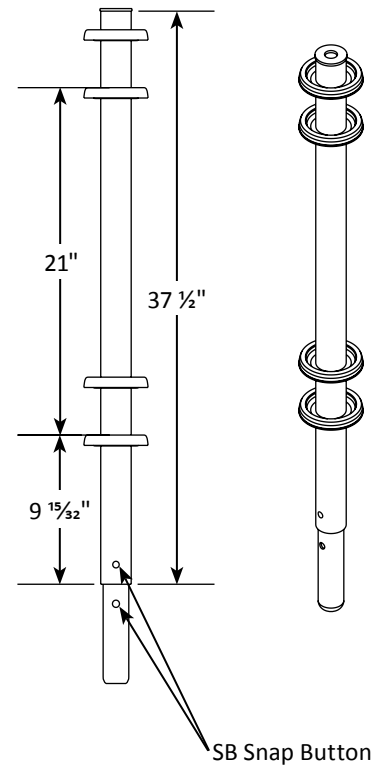
### Guard Rail Post - SafLock®



### Guard Rail Post - CupLok®

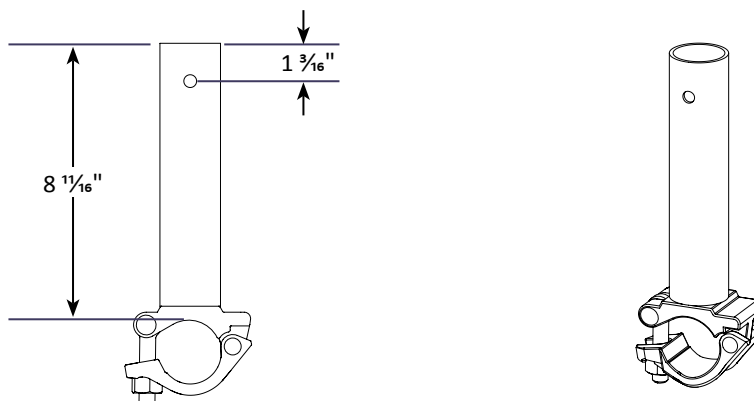


### Guard Rail Post - Systems™



## Flex-Deck Guard Rail Spigot

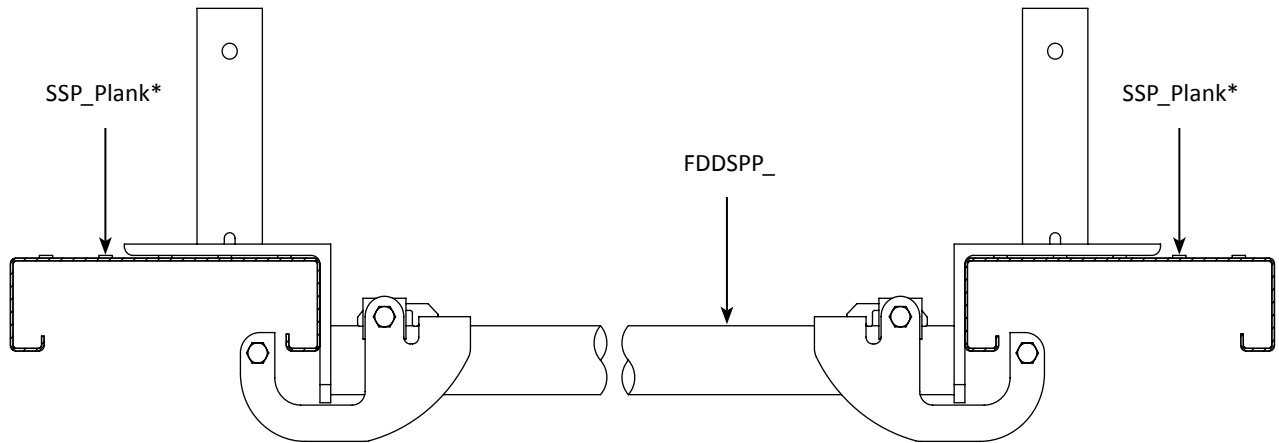
Part No.	Description	Weight lb
FDDSS	Guard Rail Spigot	3.9



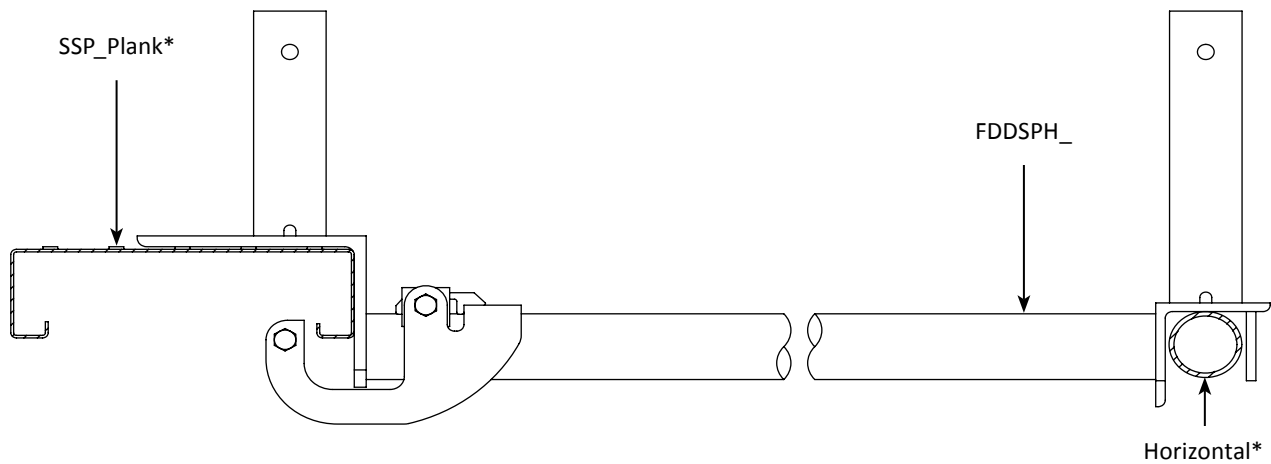
# Assembly Details

## Section 2

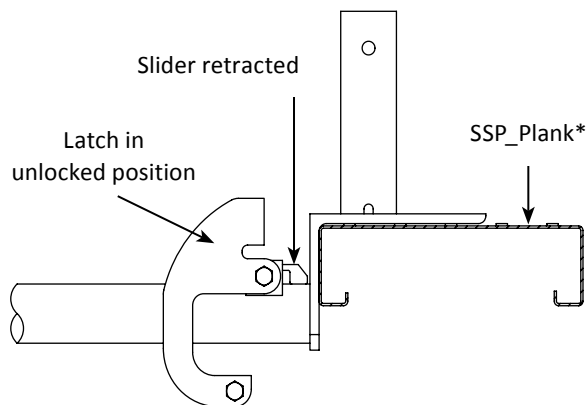
### Plank-to-Plank Deck Support Installation



### Plank-to-Horizontal Deck Support Installation

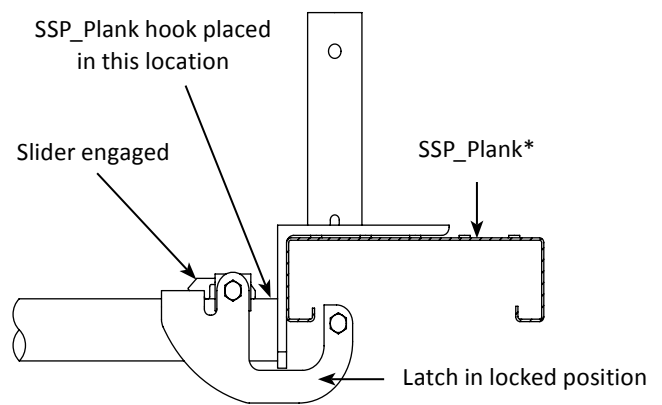


#### Plank Lock - Unlocked Position



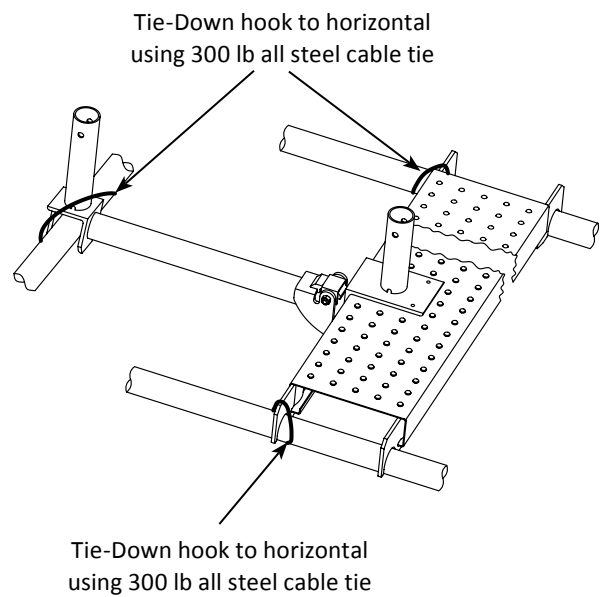
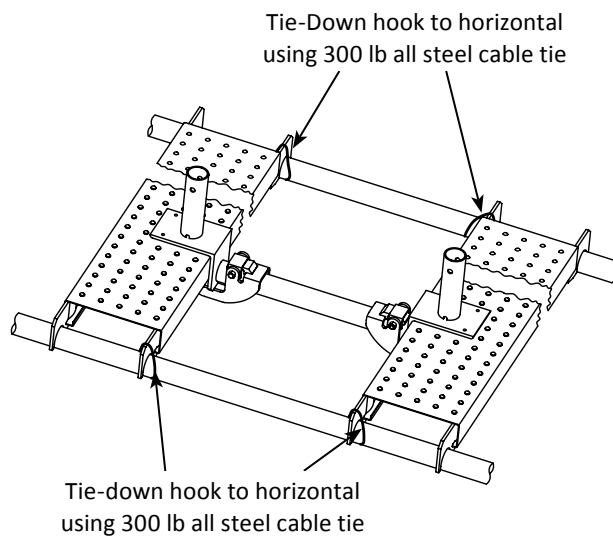
\* Ensure SSP\_Plank and Horizontals will support all applied loads, including point loads from one (1) 250 worker, including tools.

#### Plank Lock - Locked Position

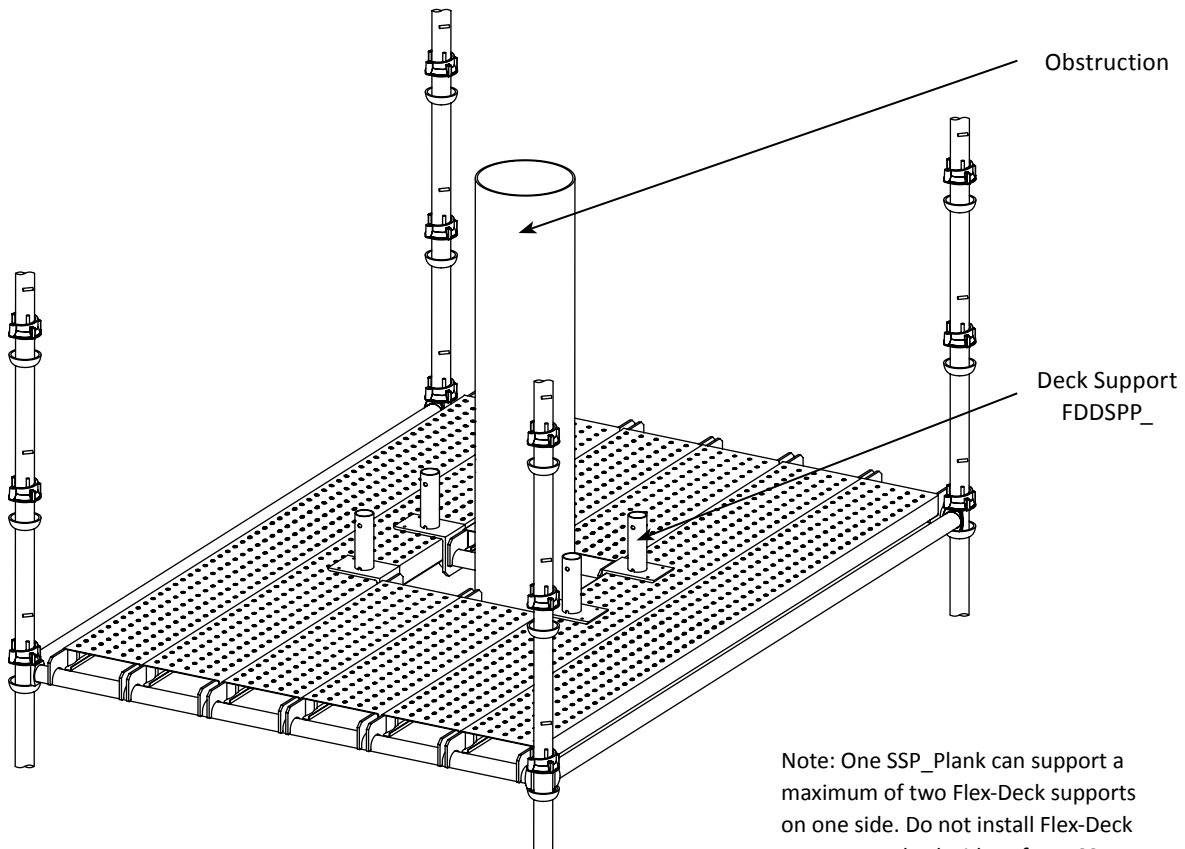


- Rotate latch as shown.
- Engage slider over latch.
- Install SSP\_Plank to secure latch in place.

## Cable Tie Locations

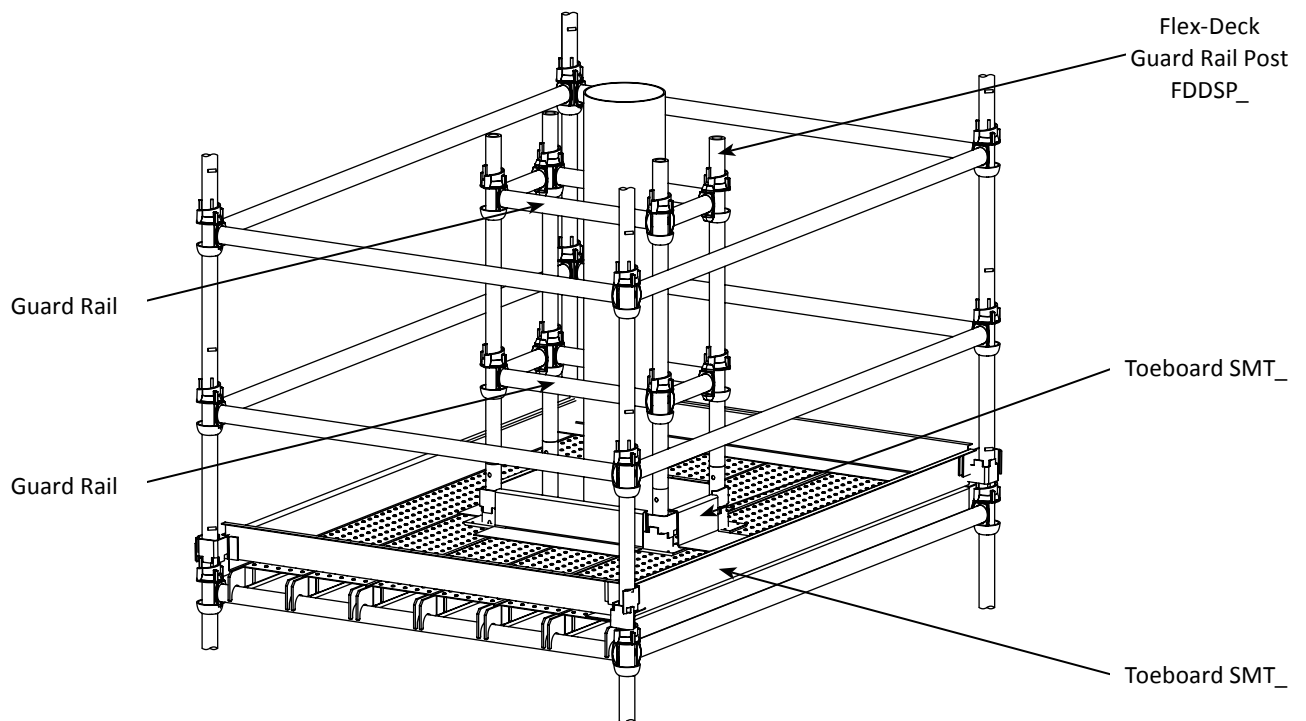


## Plank-to-Plank Deck Support - Fully Planked Platform

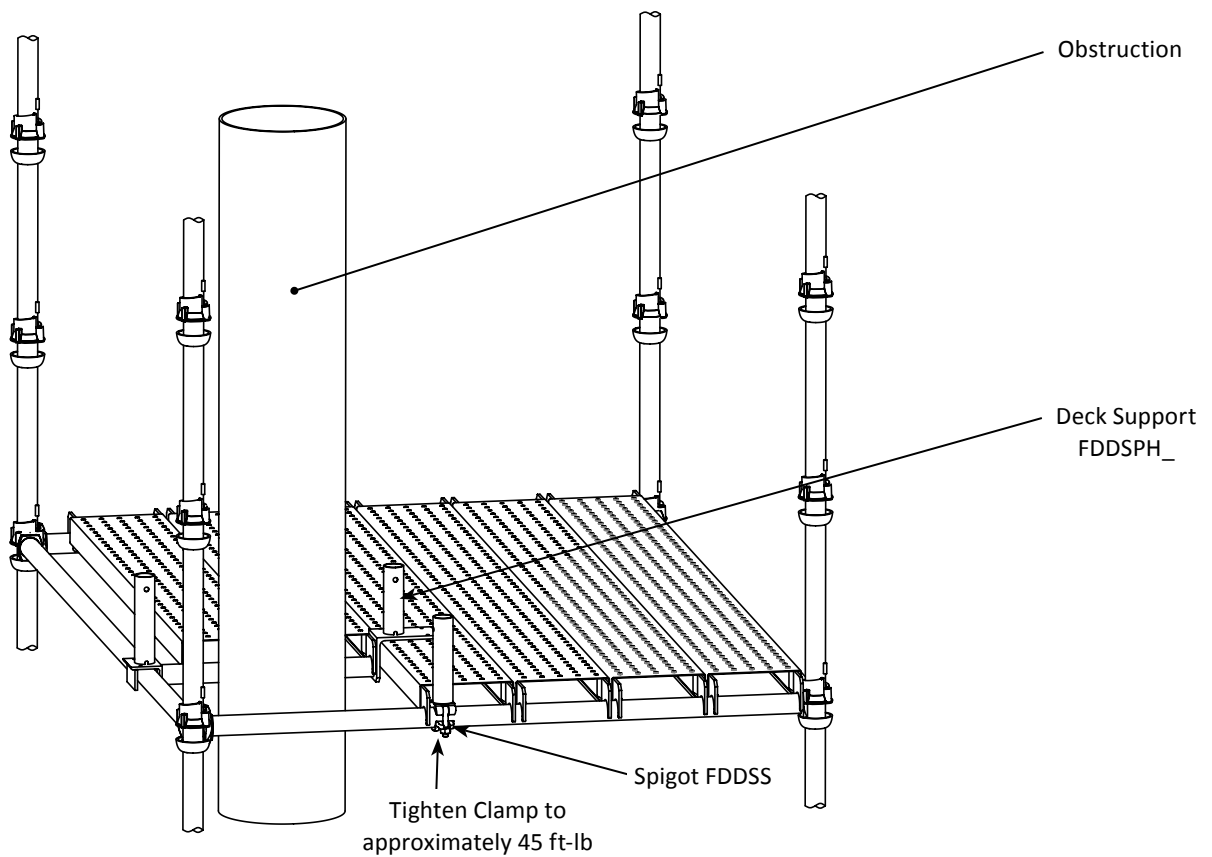


# Assembly Details

## Plank-to-Plank Deck Support - Installing Guard Rails

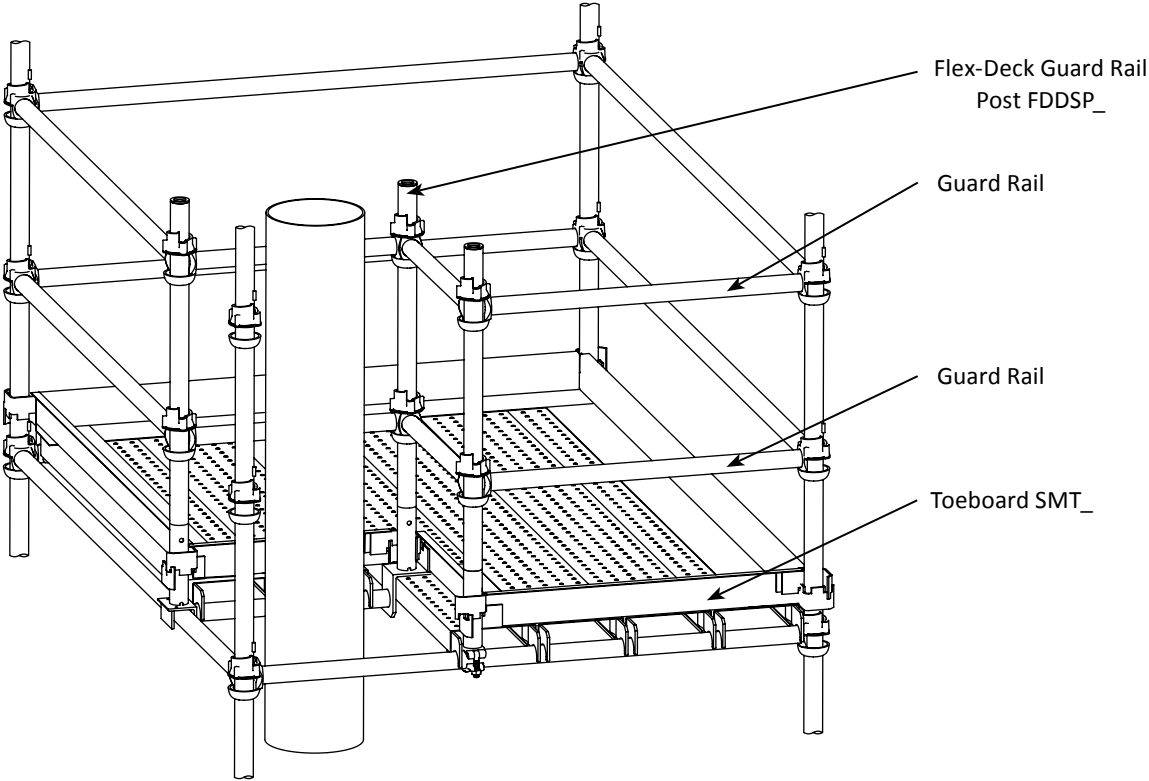


## Plank-to-Horizontal Deck Support - Fully Planked Platform

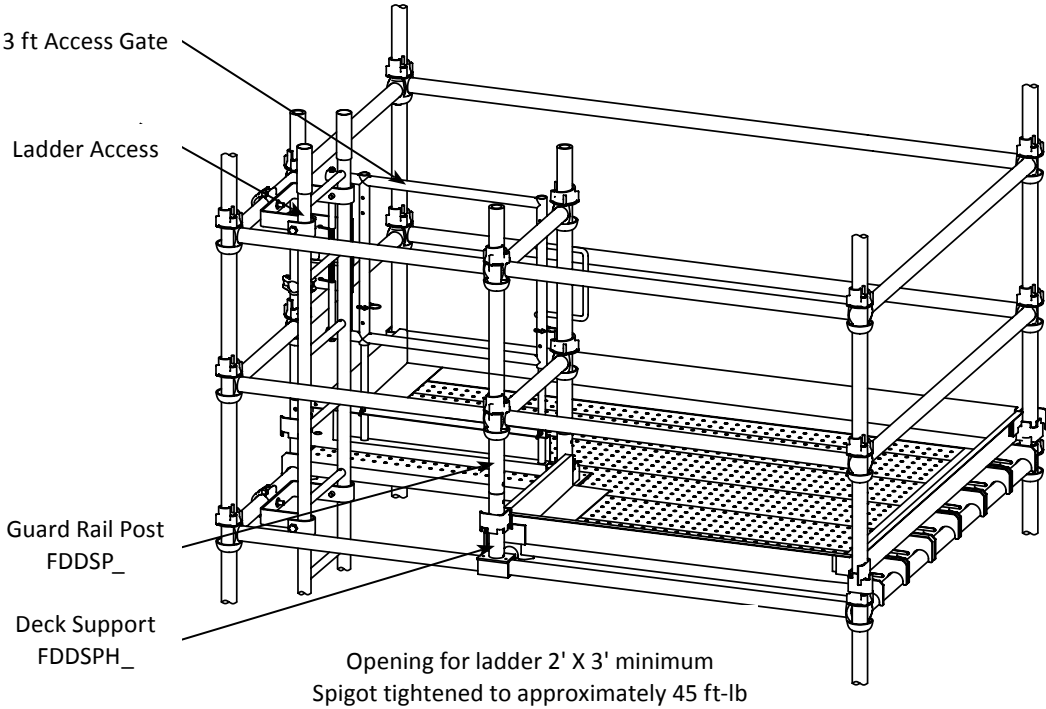


# Assembly Details

## Plank-to-Horizontal Deck Support - Installing Guard Rails



## Plank-to-Horizontal Deck Support - Installing Guard Rails



Brand Industrial Services, Inc.  
1325 Cobb International Dr., Ste. A-1  
Kennesaw, GA USA 30152  
T: 678 285 1400 | F: 770 514 0285

**BRAND**  **SAFWAY**™

For more information, visit [www.brandsafway.com](http://www.brandsafway.com)

©2019 All Rights Reserved.

ORN 270 Rev. A 6/19